

CONGREGATION BETH EL RELIGIOUS SCHOOL

PARENT HANDBOOK—2009/2010 / 5770



Find Your Way

CONGREGATION BETH EL
OF THE SUDBURY RIVER VALLEY

A Letter from Rabbi Thomas

Dear Parents:

Thank you for entrusting your children to us as we partner with you to nurture their Jewish souls.

At its best, Jewish learning is not only about growing intellectually, it is about tending the spiritual needs of our children and ourselves. At Beth El, we strive to recognize the uniqueness of every child, and encourage each of them on their way.

Judaism is not only a tradition to be studied, it is a story — the story of our people and our relationships with God. We hope to inspire our children to see Jewish learning as a lens for self-reflection as they grow and deepen their sense of connection to the Jewish people.

Judaism is also a way of life. It is a way of being in the world. Together we seek meaning as we address ultimate questions: “Who am I?” and “What is my unique purpose in the world?”

Our goal is to come to know our selves; how we connect with each other and with God. Our goal is to taste the richness of Jewish life and to find joy in Judaism.

Thank you for entrusting your children to us. We invite you to join us in lifelong Jewish learning so that we all value and live what we teach and learn.

Rabbi David B. Thomas

A Letter from Nina Price, Director of Congregational Learning

Dear Parents:

We are pleased to share with you our updated Religious School Parent Handbook. This handbook was compiled by the School Committee and it reflects many years of work on the part of the staff and lay leaders to strengthen Beth El's Religious School and clearly define who we are and what we strive to achieve.

Not only does this handbook contain clarified policies, it also reflects the goals, values,

curriculum, and overall school experience we wish to provide to your children. Please read through the handbook and share your feedback with teachers and School Committee members. Your ongoing concern and involvement helps maintain the high quality of our school.

Todah Rabbah (Thank you),

Nina Price, Director of Congregational Learning

Contents:

| | | | |
|--------------------------------------|----------|---|-----------|
| <u>Building our School Community</u> | 2 | <u>Absences, Cancellations & Medical Info</u> | 8 |
| <u>School Schedule</u> | 4 | <u>Academic Policies</u> | 9 |
| <u>Contact Information</u> | 5 | <u>Curriculum Overview</u> | 10 |
| <u>Classroom Environment</u> | 6 | <u>More Opportunities for Learning & Growth</u> | 11 |
| <u>Transportation Issues</u> | 6 | | |

Building Our School Community



Find Your Way

 CONGREGATION BETH EL
OF THE SUDBURY RIVER VALLEY

Religious School Charter and Guiding Principles

The core mission of Congregation Beth El's Religious School is to foster Jewish growth through learning. Jewish learning is a life-long process that begins in the Religious School and is enhanced by learning in the home and community. We strive to develop in our students a love of Judaism and Torah and advance their joy and delight in Jewish growth and community. The following are the core Jewish values and principles we teach our students:

The core mission of Congregation Beth El's Religious School is to foster Jewish growth through learning.

| | |
|---|---|
| <i>Derech Eretz</i> – The Moral Way | <ul style="list-style-type: none"> • Respect for peers, teachers, and leaders • Responsibility for one's actions • Concern for both the immediate community and the world at large |
| <i>Talmud Torah</i> – Study | <ul style="list-style-type: none"> • Appreciation of Jewish textual tradition • Relevance of Torah to our lives, our past, and our future • Interpretation and questioning of texts |
| <i>Kavanah</i> – Finding One's Own Way | <ul style="list-style-type: none"> • Exploring conversations with and conceptions of God • Working toward a personal theology |
| <i>Ivrit</i> – Hebrew | <ul style="list-style-type: none"> • Competency in Hebrew reading • Knowledge of vocabulary to enhance the study of Torah and prayers |
| <i>T'fillah</i> – Prayer | <ul style="list-style-type: none"> • Connection to and comfort with Jewish liturgy • Development of a personal spiritual expression |
| <i>Z'man Yehudi</i> – Jewish Time | <ul style="list-style-type: none"> • Awareness of the Jewish yearly cycle • Understanding of themes, rituals, and history of Jewish festivals • Integration of Jewish life cycle into one's own life |
| <i>Am Yisrael & Medinat Yisrael</i> – Peoplehood | <ul style="list-style-type: none"> • Sense of connection to the State of Israel and the Jewish People • Understanding of the history and current state of the Jewish People |

Parents as Partners

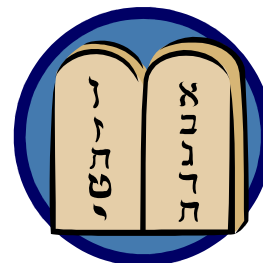
We welcome and encourage parent participation in the Religious School. Parents are our essential partners in the Jewish education of our students. In particular, parents can help as follows:

- Discuss with your children the importance of Jewish learning to you and your family.
- Ask your children about what they are learning. Continue class discussions at home. Encourage your children to practice their Hebrew reading regularly, and listen to them read.
- Take an active role in the Religious School. Volunteer to help in a classroom or serve on the School Committee.
- Become a learner yourself. Participate in the many adult learning opportunities offered throughout the year. Show your children that Jewish education is important to you as well.
- Bring Judaism home. Attend services as a family, celebrate holidays at home, add more Jewish customs and practices to your family routines.

Student Code of Conduct

All students at the Religious School are expected to behave in a manner that shows respect for the other students, the staff, and the school. Disruptive behavior will not be tolerated. At the beginning of the school year, each class will develop its own "brit" (classroom covenant), jointly agreed upon by the teachers and

students, setting forth the rules and expectations in that classroom for the school year. The school expects students to comply with those rules and parents to support the staff in encouraging their children to behave in an appropriate manner.



Role of the School Committee

Beth El's School Committee is a group of parents and student representatives who meet monthly to discuss school policy and performance issues. Committee meetings are led by the School Committee Chair. The Interim Principal also participates in these meetings.

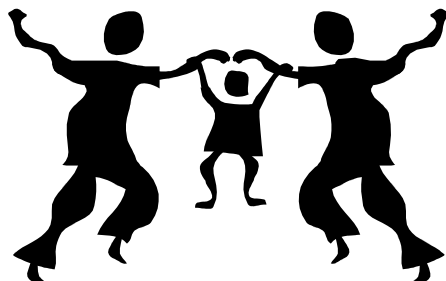
The School Committee actively supports and guides the Religious School. Examples of efforts taken on in the past include:

- Kick off events at the beginning of the school year
- Community building programs for parents of Religious School attendees
- Development of the Parent Handbook
- Strategic planning for the Reli-

gious School

- Review and make recommendations on the school budget including school fees and expenses
- Collect feedback and facilitate end of year evaluations of the Religious School - both from students and parents
- Organize and sponsor the teacher appreciation dinner
- Provide input and guidance to the Director of Congregational Learning on Religious School events and curriculum.

We are looking for new members for the School Committee & Youth Committee. If you are interested in joining, please let us know!



School Schedule



School Hours

| | | |
|-----------------------------|--------------------|---|
| Kindergarten, Grades 1 & 2 | Sunday | 11:30 a.m. – 1:30 p.m. |
| Grades 3 through 6 | Sunday Thursday | 9:00 a.m. – 11:00 a.m. 4:00 p.m. – 6:00 p.m. |
| Grade 7 | Thursday | 4:00 p.m.—6:00 p.m. |
| High School (grades 8 – 12) | Monday | 5:45 p.m. – 8:30 p.m. * |

* Dinner and discussions 5:45 – 6:30 p.m.

Calendar 2009-2010/5770

Grades K to 2:

School begins on **Sunday, October 4, 2009.**

The following are the dates school will be in session:

Oct: 4, 18, 25
 Nov: 1, 8, 15, 22
 Dec: 6, 13, 20
 Jan: 10, 24, 31
 Feb: 7, 28
 Mar: 7, 14, 21, 28
 Apr: 4, 11
 May: 2, 9, 16, 23

The last day of class is **Sunday, May 23, 2010.**

Grades 3 to 6:

School begins on **Sunday, October 4, 2009.**

The following are the dates school will be in session:

Oct: 4, 8, 15, 18, 22, 25, 29
 Nov: 1, 5, 8, 12, 15, 19, 22
 Dec: 3, 6, 10, 13, 17 20
 Jan: 7, 10, 14, 21, 24, 28, 31
 Feb: 4, 7, 11, 25, 28
 Mar: 4, 7, 11, 14, 18, 21, 25, 28
 Apr: 1, 4, 8, 11, 15, 29,
 May: 2, 6, 9, 13, 16, 20, 23

3rd-5th Grade Retreat:
 Mar 26-27. No classes Mar 28.

6th-7th Grade Retreat:
 Oct 16-17. No classes Oct 18.

The last day of class is **Sunday, May 23, 2010.**

Grade 7:

School begins on **Thursday, October 8, 2009.**

The following are the dates school will be in session:

Oct: 8, 15, 22, 29
 Nov: 5, 12, 19
 Dec: 3, 10, 17
 Jan: 7, 14, 21, 28
 Feb: 4, 11, 25
 Mar: 4, 11, 18, 25
 Apr: 1, 8, 15, 29
 May: 6, 13, 20

6th-7th Grade Retreat: Oct 16-17.

The last day of class is **Thursday, May 20, 2010.**

Grades 8 to 12:

School begins on **Monday, October 5, 2009.**

The following are the dates school will be in session:

Oct: 5, 19, 26
 Nov: 2, 9, 16, 23, 30
 Dec: 7, 14, 21
 Jan: 4, 11, 25
 Feb: 1, 8, 22
 Mar: 1, 8, 15, 22
 Apr: 5, 12, 26
 May: 3, 10, 17

8th-12th Grade Retreat: Jan 29-30.

Our 12th Grade **Siyyum** will take place on Friday, May 7.

The last day of class is **Monday, May 17, 2010.**

Contact Information

Office & Professional Staff

School: (978) 443-2151, ext 101
 Beth El Main: (978) 443-9622
 Fax: (978) 443-9629

Rabbi David Thomas: ext. 0,

Cantor Lorel Zar-Kessler: ext. 105,
cantor@bethelsudbury.org

Beth Schine: ext. 104,
prinicpal@bethelsudbury.org

Interim Principal

Oversees the Religious School and works with teachers to create an enriching Jewish learning experience for all K-12 students.

Dawn Shilts: ext. 101,
educord@bethelsudbury.org
Education Secretary
 Supports the Interim Principal and the Religious School.



Jody Gansel, ext. 107,
youth@bethelsudbury.org
Youth Educator

Coordinates informal educational activities, including youth groups and Religious School retreats; also teaches in the Religious School.

A complete teacher roster and class lists will be distributed to families at the beginning of the school year.

Lay Leadership

Emily Epstein, **V.P. School and Chair, School Committee**
 (978) 440-8765, theepsteins@yahoo.com

Supports and oversees Director of Congregational Learning, Interim Principal and Religious School

David Fitzpatrick, **Youth Committee Chair**
 (508) 872-2052, dfitz@us.ibm.com

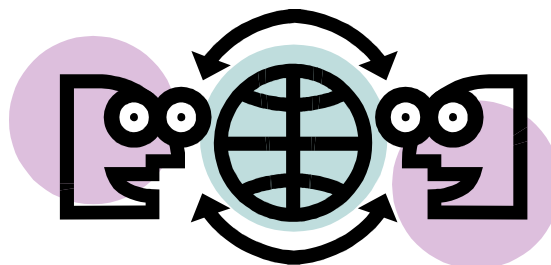
Supports Youth Educator in planning informal educational activities

Lines of Communication

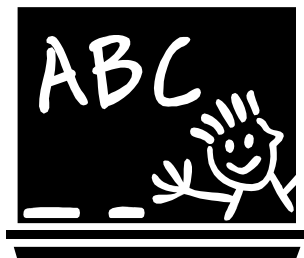
If any problems or concerns arise during the school year, please address them in the following manner:

1. Speak directly with your child's teacher.
2. If the problem or concern persists, set up a meeting with the Interim Principal.

3. If you are not satisfied after talking with the teacher and the Interim Principal, contact the School Committee chair.



Classroom Environment



In order to promote an atmosphere conducive to learning, please adhere to the following guidelines:

Visitors

While we welcome visitors, there are times when a guest in the classroom is not appropriate. If your child wants to bring a guest, the teacher must be notified in advance.

Food

All food (including before-school snacks) brought into the building must follow syna-

gogue kashrut policy. All dairy foods are allowed, but any meat products must be kosher. During Pesach no chametz (bread products) are allowed.

Due to serious allergies of both Religious School and Preschool students, we are asking that snacks do not contain peanuts or tree nuts. Creating nut-free classrooms increases the safety for all of our students.

No food will be allowed during class time itself. On Sundays, a bagel brunch will be served

before class. On Mondays, a dinner will be provided before class. On Thursdays, a snack will be served half-way through school. The fees for this food were included in your registration.

Electronics

During class time all cell phones and electronic games must be put away. Any devices that interrupt the class will be confiscated by the teacher until the end of the school day.

Transportation Issues

Drop-Off Policy

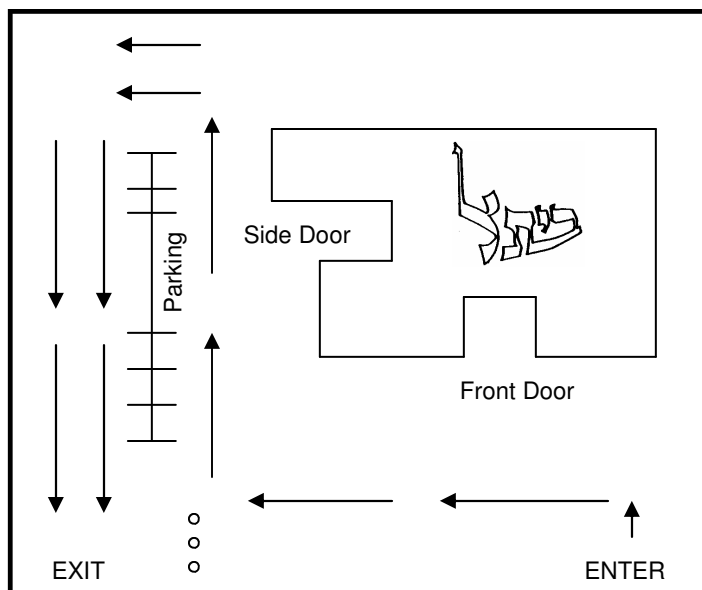
In order to make the best use of school time, it is important that children be in their classroom promptly for the beginning of class. On Thursday afternoons, supervision starts at 3:45 pm to enable early drop-offs. On other days and before 3:45, parents are responsible for their children's behavior and safety.

Pick-up After School

Children should be picked up **promptly** after class. If children are habitually picked up late, the matter may be referred to the Synagogue Board for action.

If someone other than the designated carpool driver is picking up your child, the school must be notified **in writing**. Telephone arrangements can be accepted only in an emergency situation. The designated person must come into the synagogue office to get your child.

For mid-week classes, parents must park in **double carpool** lines during dismissal. (See Diagram Below).



Hudson Road

Transportation Continued...

Once **ALL** children are safely in their cars, the teacher in charge will signal drivers to start their engines and move out. Cars must exit in order unless directed by the teacher. Any cars parked in the center section must wait for the lines to leave before pulling out.

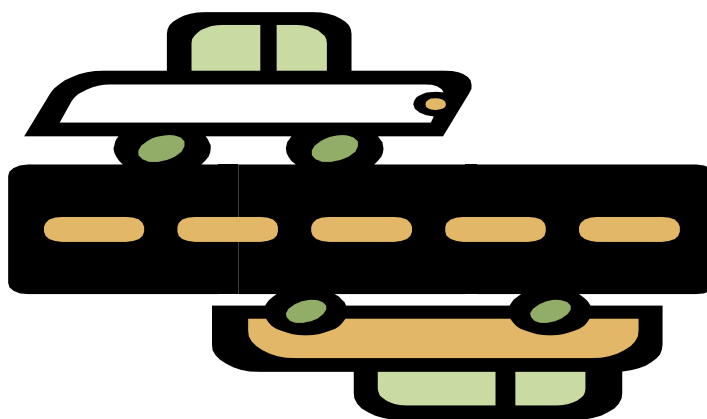
Parents coming into the building must park in the spaces in the center of the parking lot and **NOT** in the carpool lanes.

Do not leave cars unattended in the pick-up line!

Early Pick-Up

If you need to pick up your child before dismissal for medical or other reasons, you **MUST** come into the synagogue office and sign your child out. Students are **not** allowed to wait outside for parents. If someone else is picking up your child, we must have a note to that effect.

Teens who drive themselves to class on Monday nights should sign out with the person on office duty if they need to leave early.



Driving Policy

The Beth El School Committee, Youth Committee, and Legal Counsel have developed a driving policy to protect both our teen drivers and the congregation. The following are highlights of the policy. Please contact the office if you would like to see the complete document.

- If Beth El arranges the transportation for an event or off-site activity, teens **MAY NOT** drive other teens as part of the driving arrangements.
- Teens **ARE NOT** allowed to drive to and from overnight events.
- Parents may drive their own children and other children to and from events. It is understood that the parent assumes complete liability for what happens while driving.
- Carpooling is encouraged to help all parents with transportation issues.
- Staff members **MAY NOT** drive children because it would incur too much liability on the staff member and Beth El.

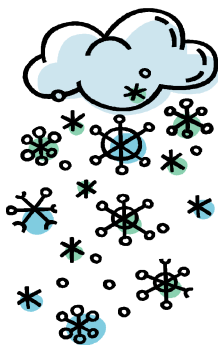
Absences, Cancellations, & Medical Info

Attendance

If your child will be absent, please notify the school office at (978) 443-2151, ext 101. If we have not heard from you, and your child is absent more than twice in a row, you will receive a call from your child's teacher.

We are concerned about your child(ren)'s well-

being. Please share with the staff the reason for an absence to help them gain a sense of what events are taking place in students' lives outside of Religious School. Teachers want to be able to both celebrate with and comfort their students. They can do this only if they are kept informed.



Cancellations/Inclement Weather

Beth El will cancel classes when Sudbury schools cancel classes. If a decision is made to cancel school during a public school day already in progress, Sudbury public schools will be notified, and **phone calls will be made according to the information**

listed on your registration forms. Please BE SURE to have a back-up plan in place with your child should classes be cancelled mid-day.

If we need to cancel school on a Sunday, phone calls will be made through a class snow cancellation chain.

If school is cancelled on a Monday night, an email will be sent out to notify families by 4pm.

In the event of any weather-related school cancellation, notices will be posted with local news and radio stations.

Illness

A child with a fever or a contagious illness should not attend school. Please notify the school office at (978) 443-2151, ext 101 and teacher if your child has a contagious illness.

If your child becomes sick during school hours, s/he may either rest in the office until the end of school or be picked up early. The office will not administer any medicine, including Tylenol or aspirin, to students (except as noted below).



Medical Information

If medications need to be administered during Religious School, special arrangements must be made in writing to the Education Secretary. If there is a change in any information on the Medical Information Form (i.e. physician, health coverage, allergies, etc.) please notify the Education Secretary.

Emergency Medical Procedure

In the event of a medical emergency, we will attempt to contact the parents or those on the emergency list. If we are unable to do so, we will attempt to reach your physician and finally we will call the Sudbury Fire and Police Departments to transport the child to the nearest hospital.

Academic Policies

Class Placement

The staff will make decisions regarding placement of children with peers or teachers. Efforts will be made to ensure that your child is placed with at least one requested friend. Please review your child's class list prior to the start of the school year so concerns can be proactively addressed.

Student Evaluation

The following methods will be used to inform parents of a child's involvement, progress, and achievement:

- A written report for grades K-11 will be sent home twice a year (January and the end of the school year). The progress reports are narrative reports addressing both academic/intellectual growth and spiritual/communal growth.
- Private conferences involving the student, parents, teacher, and Interim Principal can be arranged at the request of any party.

Homework

Appropriate homework is assigned. Teachers will inform parents of homework assignments via e-mail. Generally, assignments are given once a week to allow enough time to complete them and focus on reinforcing Hebrew reading skills. Parents should check to be sure the assignments are completed. An absentee is responsible for contacting the teacher or a classmate for the assignment.

Special Needs

Complete and return the Individual Needs Form mailed to you prior to the start of the school year. This form asks for information regarding special needs, learning disabilities, cultural sensitivities, etc. To help us create a positive learning experience for your child, please speak to the Special Needs Coordinator and to your child's teacher regarding your child's specific needs.

Beth El belongs to the Sudbury Valley Jewish Special Education Initiative, a consortium of congregational schools that offers support to learners with special needs and their families.

Madrichim

We are fortunate to have a skilled cadre of teenagers who work as madrichim (teaching assistants) in grades K-4. These teens not only enrich the classroom environment, they also serve as positive Jewish role models for our younger students.

Beth El belongs to the Sudbury Valley Jewish Special Education Initiative, a consortium of congregational schools that offer support to learners with special needs and their families.



Curriculum Overview



The goals of the Religious School are to provide students with a strong grounding in Jewish values. These include liturgy, culture, theology, and history.

Each year, the curriculum covers these primary topics at grade-appropriate levels. Students develop the associated skills to reinforce the material to

which supplemental activities are added. Joint student-parent learning sessions are spread through the curriculum to reinforce that learning is a life-long family activity here at Beth El.

Our philosophy is to use interactive, engaging teaching practices and to relate material to students through

discussions and thought-provoking activities. Students teach and learn from each other and synthesize their Religious School experience into their own lives. All school activities are grounded in a sense of community, connectedness, and a joy of learning.

| <u>Grade</u> | <u>Curriculum Elements</u> |
|--|---|
| Kindergarten | Introduction to Beth El <i>Aleph Bet</i> Jewish Symbols |
| 1 | <i>Aleph Bet</i> & Hebrew Vowels Jewish Holidays & Shabbat Jewish Values |
| 2 | Basic Hebrew Reading Introduction to Israel |
| 3 | <i>Shema</i> & Her Blessings Our Biblical Family |
| 4 | <i>Amidah</i> Torah: Our Encounters with God |
| 5 | Torah Service & Concluding Blessings Journeys To and Through Israel |
| 6 | <i>P'sukei D'zimra</i> & <i>Birchot HaShachar</i> – Morning Prayers <i>Kedoshim Tehiyu</i> – And You Shall Be Holy: Living Jewish Values |
| 7 | Parashat HaShavuah—Reading Torah in Hebrew Jewish Lifecycles Comparative Judaism & Religion |
| 8 | Israel – Inside & Out <i>Shoah</i> /Holocaust – Honoring & Remembering |
| 9 | Jewish Leadership in the <i>Tanach</i> and Today <i>Neviim</i> & <i>Ketuvim</i> – Prophets & Writings |
| 10 | Introduction to Sacred Texts Torah Commentaries, <i>Midrash</i> , <i>Mishna</i> , <i>Talmud</i> |
| 11 | Jewish Historical Experience Structure of the Jewish Community |
| 12 | Jewish Philosophy and Theology Principles of Liberal Judaism |
| Grades 6&7— B'nai TELEM | In grades 6 & 7, students will have the opportunity to participate in <i>B'nai TELEM</i> , community service projects organized by the Jewish Community Relations Council (JCRC). |
| High School <i>Netivot</i> : Pathways to Jewish Identity | Each year, our students in grades 8-12 select a focus for exploring their Jewish identity through both learning and action. The semester-long pathways offered include: Arts, Leadership, Hebrew and Israeli Culture, Social Justice, Text Study, and more... |

More Opportunities for Learning & Growth

Youth Groups

All our programs are affiliated with NFTY, National Federation of Temple Youth. These groups are open to all congregation members, and enrollment in our Religious School is **not** a requirement to join.

For a listing of weekly activities, please reference our website: www.bethelsudbury.org.

For more information, contact our Youth Educator, Jody Gansel, youth@bethelsudbury.org.

JWASTY (Junior WASTY) is our youth group for six and seventh graders. It meets quarterly. Membership is encouraged but optional. Events address both social and Judaic purposes. A highlight of the year is a regional event in Brookline.

WASTY (We Are Sudbury Temple Youth) is our youth group for 8th-12th graders. Membership is encouraged but optional, and dues are charged. WASTY members are automatically members

of NFTY, the National Federation of Temple Youth. All events have a social feel with Judaic purpose and value to them. The events are planned and implemented by our teen-led WASTY Board. In addition to WASTY-only events, WASTY participates in several regional NFTY events each year.



Retreats

All retreats are education-based and designed to build community within each class.

Grades 3,4&5 – 1 night *shabbaton* (weekend overnight retreat) filled with learning, singing, and socializing

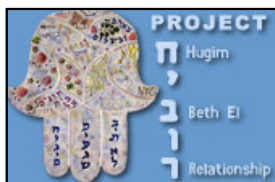
Grades 6&7 – 1 night *shabbton* (weekend overnight retreat) focused on *tikkun olam*

Torah Class Retreat—Weekend of study and celebrating Shabbat with parents and peers (part of *Bar/Bar Mitzvah* preparation)

High School – weekend *shabbaton* and a trip to either New York or Washington DC



Project HiBuR



Project HiBuR: Hugim - Beth El Relationship is an innovative program that fosters connections be-

tween 9th, 10th, and 11th graders at Beth El and their peers at Hugim, a public high school in Haifa. The curriculum explores Jewish identity, social justice, and people-hood through a lens of Jewish holiday celebrations. The project includes web-based interaction, video conferencing

and face to face encounters in both the United States and Israel. This year we will be hosting the Israelis October 4—11. Project HiBuR is generously supported by the CJP Boston-Haifa Connection.

Family Learning

Family learning is an integral part of the educational mission of Beth El. We offer an extensive Family Education program. Families with students from early childhood through sixth grade have a multitude of opportunities to learn together. These programs are integrated into the Religious School and usually are scheduled during normal class times. In addition to inspiring and supporting the Jewish journeys of our members, the primary goals for family learning at Beth El include:

- Building community through learning with and from each other
- Providing opportunities for parents and children to learn and experience Jewish growth as partners
- Strengthening the dialogue within families about their Jewish heritage, traditions, beliefs, and practices
- Honoring and encouraging the growth and expression of the holiness of our families

Early Childhood Programs are held before many major holidays and are appropriate for preschool aged children.

Programs for Kindergarten through Grade 2 – Family holiday programs provide opportunities for parents and students to explore Jewish holidays together. These programs center around a specific theme related to the holiday being celebrated.

Programs for Kindergarten through Grade 6 – Grade-based family learning programs are provided throughout the year. There will be multiple opportunities for families to learn together with the other families in their children's classes. These programs enable parents to study together and then share what they have learned with their children in a family learning activity.

2nd Grade Hebrew – We ask parents of second-graders to attend a portion of each class, to enable individualized practice of Hebrew reading.



Youth-Focused Lifecycle Events

In order to emphasize Jewish growth as a lifelong process, we incorporate opportunities for learning and celebration at significant points along the path of Jewish growth. As a community, we celebrate Jewish growth and learning through the following programs:

Hanukkat Banim

We celebrate the commencement of the Kindergarten's formal

Jewish studies with blessings, tallitot, and a welcoming to Torah.

Siyyum Ha-Sefer After mastering basic Hebrew reading in 2nd grade, students are presented with a siddur to begin their study of prayer.

Bar and Bat Mitzvah

Our community supports students and families as they prepare for b'nai mitzvah and then rejoices with them throughout this lifecycle

event. Our Cantor tutors students weekly; our Rabbi works with students one-on-one to prepare their *Divrei Torah* (Torah discussion talks). A *gabbai* is assigned to help organize the Torah service, and the administrator assists in coordinating the celebration.

Rabbi's Torah Class

Prior to bar/bat mitzvah, students and parents participate in the Rabbi's Torah Class,

which includes text study and discussions, culminating with a retreat.

Siyyum

Our graduating seniors mark the completion of their Religious School studies by sharing personal theological statements with our community. Beth El is proud to say that 70% of our students continue on to 12th-grade Siyyum.

Passport to Israel

This is a unique savings plan to help parents send their children on a teen trip to Israel. Parents may contribute money to a fund that will be matched in part by

CJP (Combined Jewish Philanthropies). Children can enroll in the 3rd or 7th grade. Contact Judy Goldberg at Beth El for more information.



Family Camp and Shabbaton

Almost every year we have either an off-site Family Camp or an on-site Shabbaton. These congregational events are a weekend filled with rest, learning, prayer, games, song, and much more. There is programming for adults, teens, and chil-

dren as well as opportunities for families to experience Shabbat together.

Tutoring

Beth El offers a wide variety of resources within the school for tutoring. There is also tutoring offered through the Sudbury Valley Jewish Special Education Initiative. If necessary, we can help find private tutoring.

Tzedakah & Gemilut Hasadim (Acts of Loving Kindness)

Students are encouraged to donate *tzedakah* money at each class. During the year, classes will decide where to donate their *tzedakah*. In addition, students are encouraged to bring in canned goods and packaged foods to be brought to a local shelter. Additional opportunities for social justice projects will be presented to students throughout the year.

Sunday Morning School-Related Offerings

On Sunday mornings, we serve a bagel breakfast at 8:30, and again at 11:00. These are intended to provide a social opportunity for students and parents before classes start (at 9:00 and 11:30).

While children are in class, Beth El offers a range of programs. The Rabbi often teaches a *Beit Midrash* (House of Study) session concurrent with the 9:00 school session. That program is

open to the entire Beth El community, and we encourage parents to join in while their students are in class. An Adult Jewish Literacy class is held concurrent with the 11:30 school session and taught jointly by the senior staff. Again, we encourage parents to join in while their students are in class.

On some Sundays, we also offer Family Learning programs for students and parents

during normal class times. These are often divided into parent-only sessions while students are in the classroom, followed by a joint parent/child activity. These are usually grade-specific.

Finally, parents of second graders are asked to accompany their children in the classroom during a half-hour portion of the class. That enables us to provide individualized practice in Hebrew .

Many parents also find those sessions useful refreshers (or first-time training sessions) in reading Hebrew.

While children are in class, Beth El offers a range of programs. We invite you to stay and participate!